

ARCON

Hybrid Construction, Inc.

*Guaranteed Price.
Guaranteed Schedule.
Best Value – Guaranteed!*

CALL FOR MORE INFORMATION

570-374-3711

www.modularhybridconstruction.com



STUDENT HOUSING COMPLETE TURNKEY PACKAGE

- 72 Beds
- 150 Days
- Flexibility in Design & Finish
- Guaranteed Pricing
- Guaranteed Schedule

Hybrid Off-Site Construction

Simplify the building process, minimize on campus disruption and appreciate the smartest, most efficient way to add student housing on your campus. With the **Arcon Hybrid Construction**, our hybrid off-site construction method, coupled with our fully designed and turnkey building package enables us to eliminate the typical construction challenges and provide you the ultimate student housing solution. Call the **Arcon Group** today and put the power of our hybrid off-site construction team to work on your campus.

CALL ARCON TODAY FOR MORE INFORMATION 570-374-3711

Arcon 195 Airport Road Selinsgrove, PA

Phone: 570-374-3711

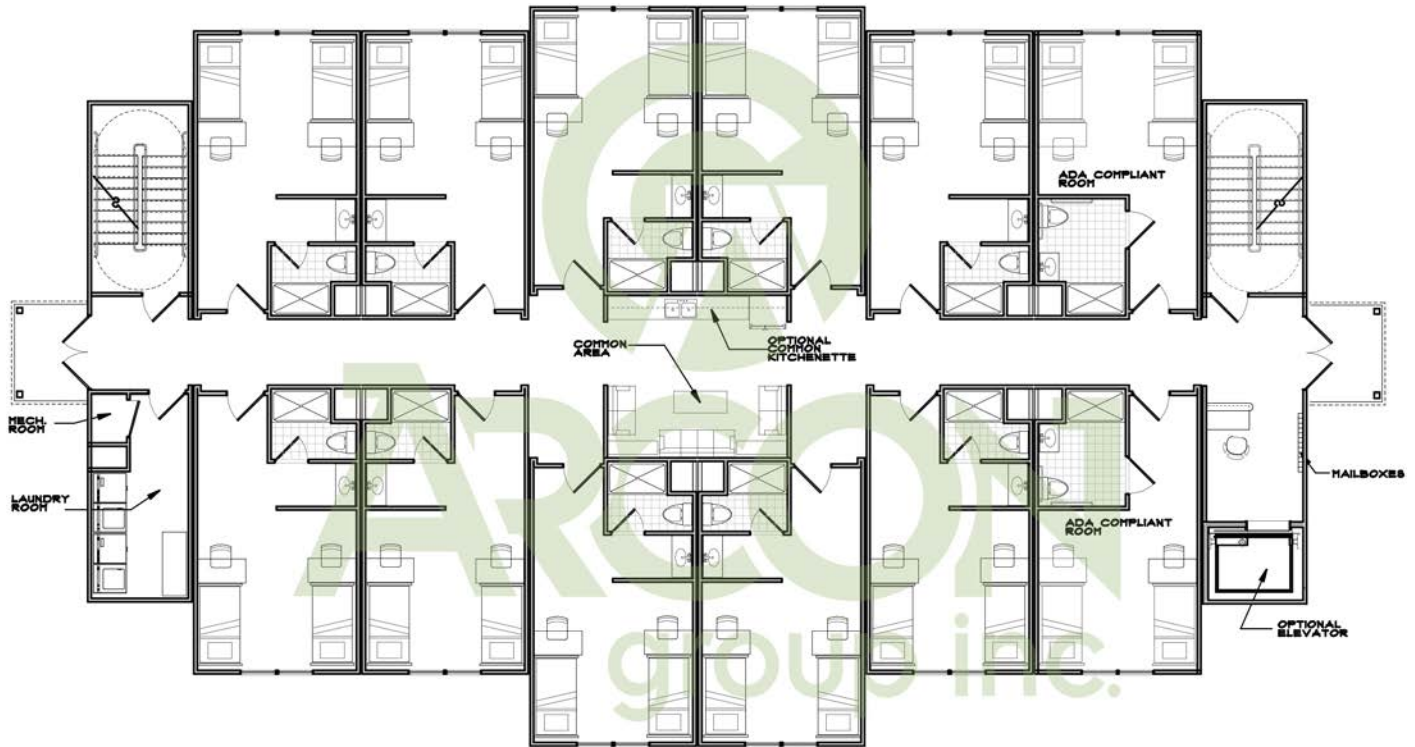
* The rendering shown is intended to be representative but maybe not an exact depiction of the actual project.

** Pricing shown assumes Purchaser has tax-exempt status. Pricing excludes site development which varies depending upon project.

TYPICAL FIRST FLOOR PLAN:

* Suite and townhouse configurations available

Overall Dimensions: • 61'-6" x 101'-4" • 16,311 sq. ft. • 36 total units • 225 sq ft per unit



SPECIFICATIONS:

- Full Basement.
- Energy Efficient.
- Double wall construction between dorm rooms for superior STC values.
- Construction Waste management – minimal waste produced from materials.
- High recycled content materials used throughout.
- Low VOC paints and primers.
- Ceramic tile flooring in baths.
- Low flow water saving bath fixtures.
- Heavy duty hollow metal door frames with Stain Grade Wood Doors.
- Door closer on dorm room entry doors.
- Grade 2 hardware package.
- Complete exterior skin package as shown.
- Full foundation/excavation Allowance.
- 30 year architectural roofing shingles.
- Complete sprinkler package.
- Complete energy efficient HVAC package.
- Energy efficient window package with high performance glazing.
- Energy Efficient certified lighting package.
- Commercial grade exterior entry door package.

➤ Arcon 195 Airport Road Selinsgrove, PA

➤ Phone: 570-374-3711

* The rendering shown is intended to be representative but maybe not an exact depiction of the actual project.

** Pricing shown assumes Purchaser has tax-exempt status. Pricing excludes site development which varies depending upon project.